
APPENDIX 4A

Figures for Section 4(f) Public Parks and Recreation Areas

This page is intentionally left blank



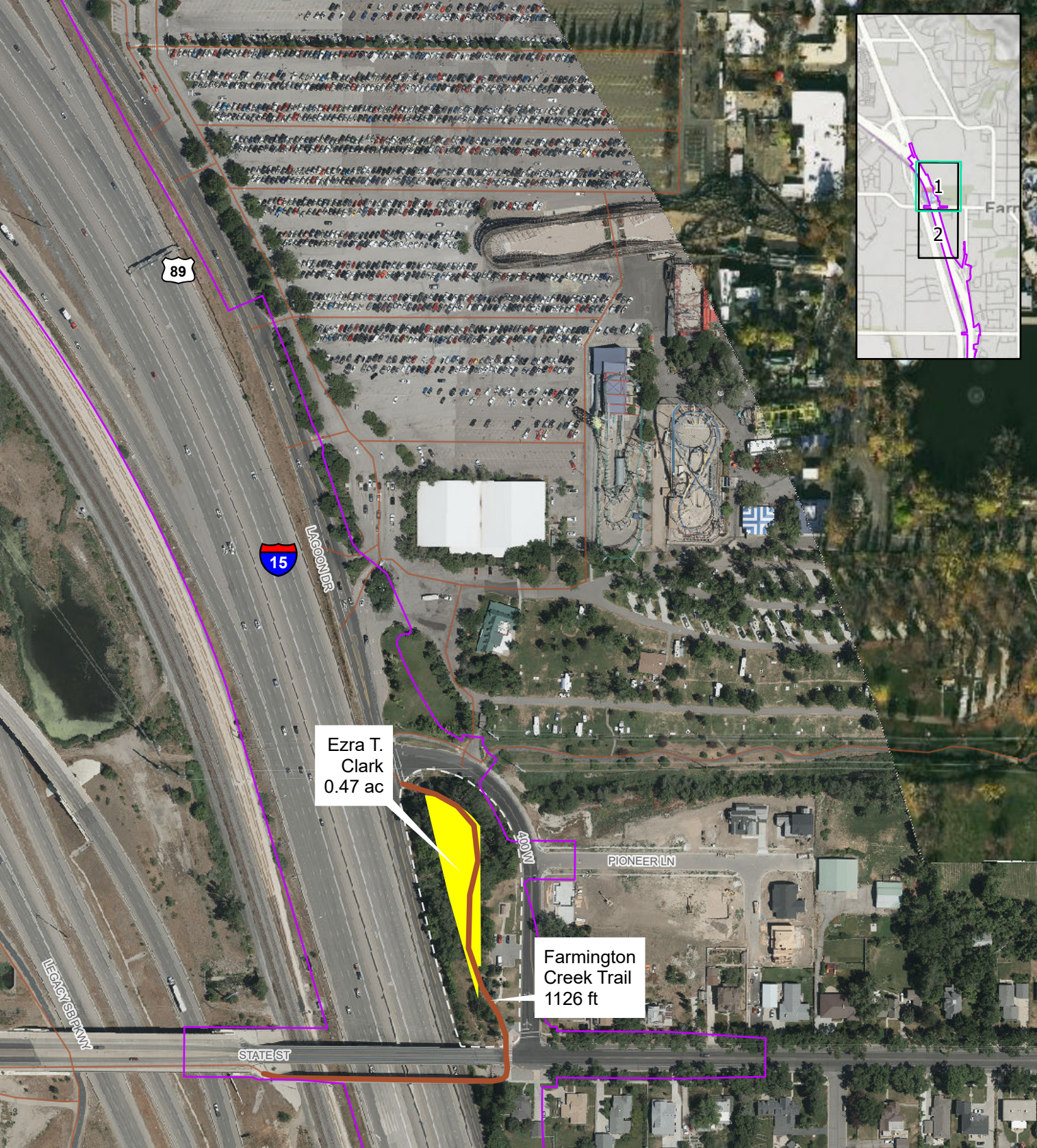
- Impact Boundary
- Section 4(f) Boundary
- Section 4(f) Impact
- Section 4(f) Trail Impact
- Local Ezra T. Clark Park Boundary



0 500 Feet

SECTION 4(F) IMPACTS - NORTH SEGMENT FARMINGTON 400 W. OPTION I-15 EIS: FARMINGTON TO SALT LAKE CITY

*Only areas with public park and recreation area impacts present are shown in this series



- Impact Boundary
- Section 4(f) Impact
- Local Ezra T. Clark Park Boundary
- Section 4(f) Trail Impact



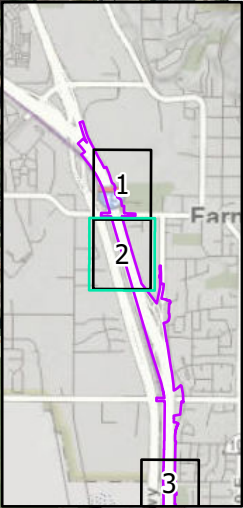
0 500 Feet

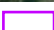
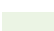
SECTION 4(F) IMPACTS - NORTH SEGMENT FARMINGTON STATE ST. OPTION I-15 EIS: FARMINGTON TO SALT LAKE CITY

*Only areas with public park and recreation area impacts present are shown in this series



Farmington Junior High School Playing Fields Temporary Occupancy



 Impact Boundary
 Section 4(f) Boundary



0 500 Feet

SECTION 4(F) IMPACTS - NORTH SEGMENT
FARMINGTON BOTH OPTIONS
I-15 EIS: FARMINGTON TO SALT LAKE CITY

*Only areas with public park and recreation area impacts present are shown in this series



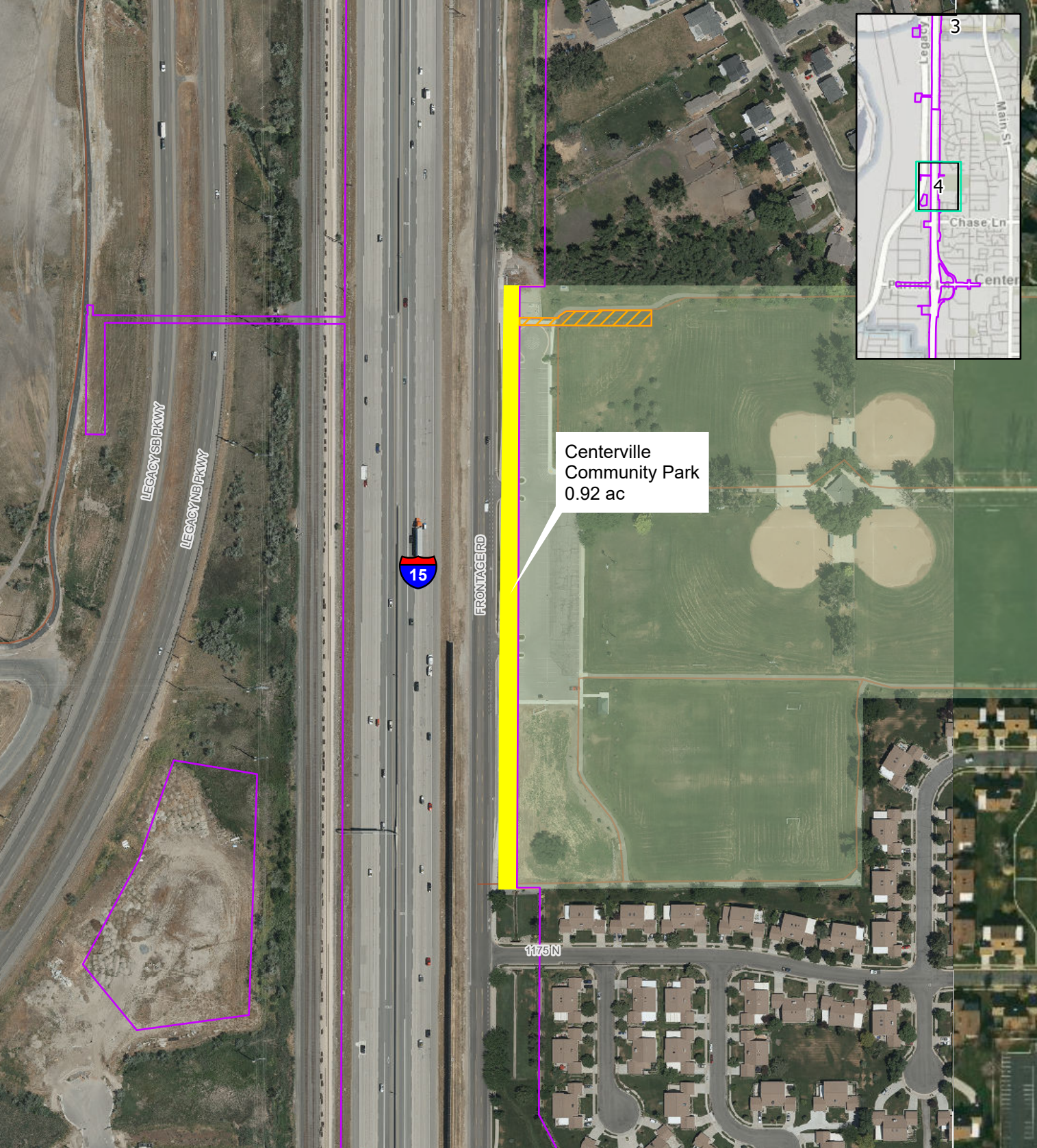
- Impact Boundary
- Section 4(f) Boundary
- Section 4(f) Impact

*Only areas with public park and recreation area impacts present are shown in this series



0 500 Feet

SECTION 4(F) IMPACTS - NORTH SEGMENT FARMINGTON BOTH OPTIONS I-15 EIS: FARMINGTON TO SALT LAKE CITY



Impact Boundary

Section 4(f) Boundary

Section 4(f) Impact

Temporary Occupancy for Pedestrian Bridge



0 500 Feet

SECTION 4(F) IMPACTS - NORTH SEGMENT

FARMINGTON BOTH OPTIONS

I-15 EIS: FARMINGTON TO SALT LAKE CITY

*Only areas with public park and recreation area impacts present are shown in this series



Woods Cross Elementary
Playing Fields and Walking Path
Temporary Occupancy

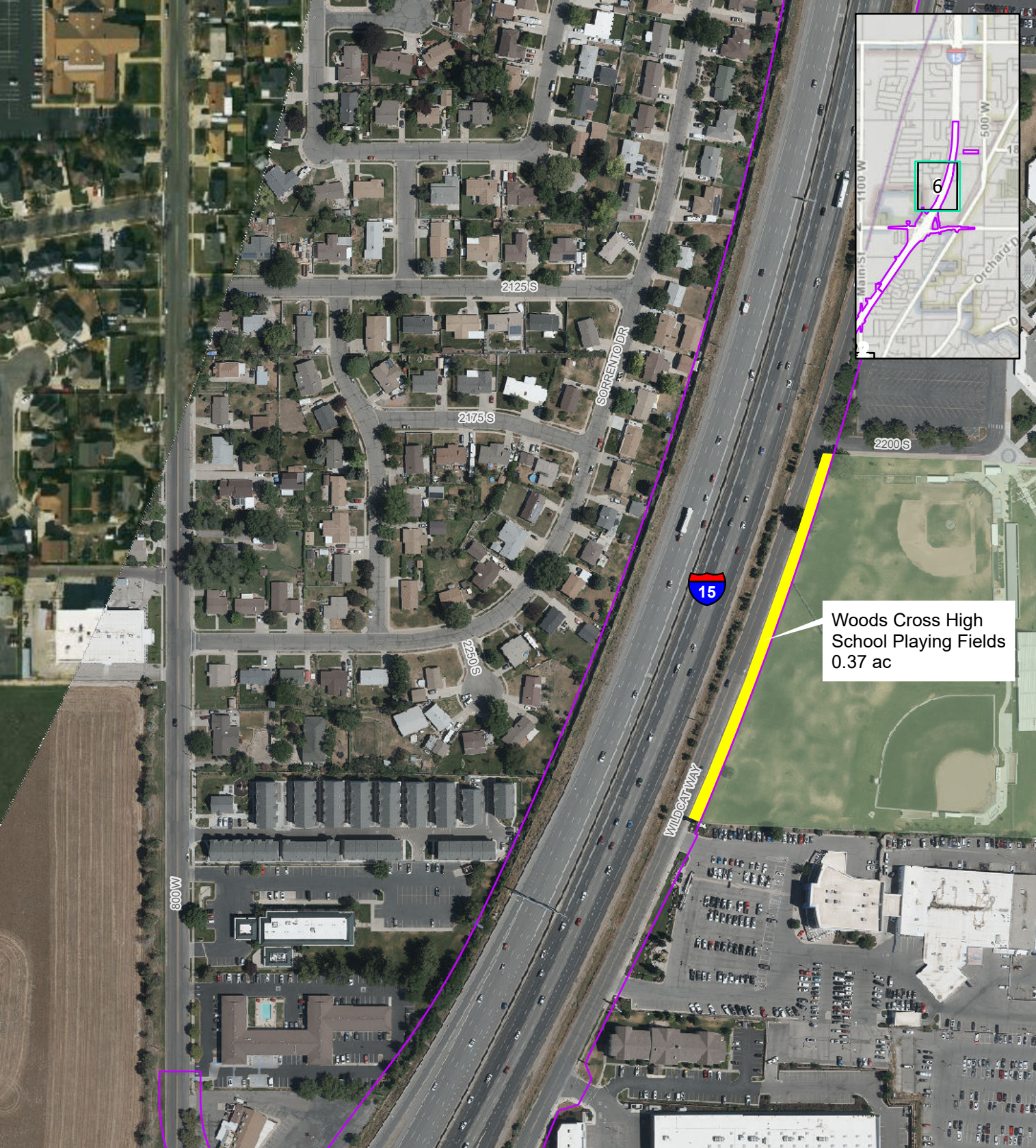
Impact Boundary
Section 4(f) Boundary



0 500 Feet

SECTION 4(F) IMPACTS - SOUTH CENTRAL SEGMENT BOUNTIFUL 500 S. BOTH OPTIONS I-15 EIS: FARMINGTON TO SALT LAKE CITY

*Only areas with public park
and recreation area impacts
present are shown in this
series



Woods Cross High School Playing Fields
0.37 ac

- Impact Boundary
- Section 4(f) Boundary
- Section 4(f) Impact



SECTION 4(F) IMPACTS - SOUTH SEGMENT SALT LAKE 1000 N. BOTH OPTIONS I-15 EIS: FARMINGTON TO SALT LAKE CITY

8*Only areas with public park and recreation area impacts present are shown in this series



Hatch Park
0.21 ac

15

215

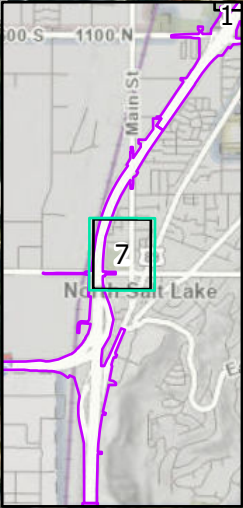
89

175N

125W

150N

CENTER ST



- Impact Boundary
- Section 4(f) Boundary
- Section 4(f) Impact

*Only areas with public park and recreation area impacts present are shown in this series



0 500 Feet

SECTION 4(F) IMPACTS - SOUTH SEGMENT SALT LAKE 1000 N. BOTH OPTIONS I-15 EIS: FARMINGTON TO SALT LAKE CITY



Impact Boundary
Section 4(f) Boundary

*Only areas with public park and recreation area impacts present are shown in this series

SECTION 4(F) IMPACTS - SOUTH SEGMENT
SALT LAKE 1000 N. BOTH OPTIONS
I-15 EIS: FARMINGTON TO SALT LAKE CITY

This page is intentionally left blank