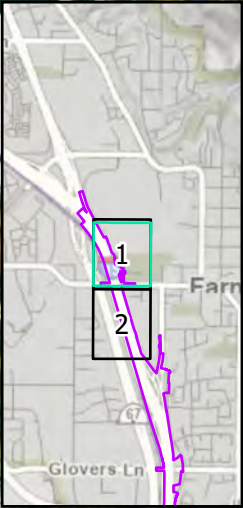

Appendix 4A

Figures for Section 4(f) Public Parks and
Recreation Areas

This page is intentionally left blank



Area for future Farmington City trail connection.

Farmington Creek Trail would cross under 400 West and be realigned to connect with the existing trail in Ezra T. Clark Park.

Ezra T. Clark
0.04 ac

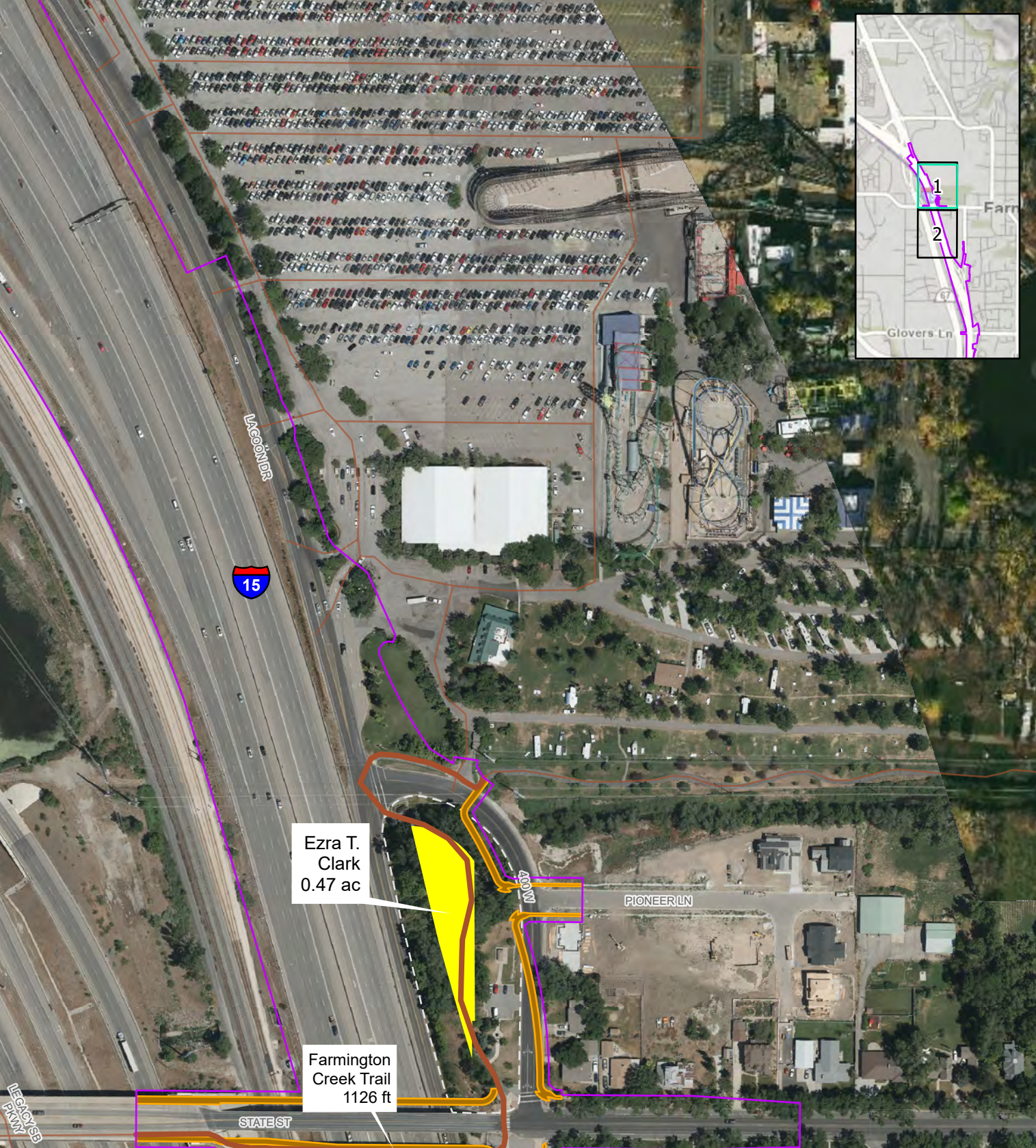
Farmington
Creek Trail
1126 ft

- Impact Boundary
- Section 4(f) Impact
- Section 4(f) Temporary Impact
- Section 4(f) Trail Impact
- Local Ezra T. Clark Park Boundary
- Relocated Farmington Creek Trail
- Future Farmington City Trail Connection



**SECTION 4(F) IMPACTS - NORTH SEGMENT
FARMINGTON 400 W. OPTION
I-15 EIS: FARMINGTON TO SALT LAKE CITY**

*Only areas with public park and recreation area impacts present are shown in this series



- Impact Boundary
- Section 4(f) Impact
- Relocated Farmington Creek Trail
- Local Ezra T. Clark Park Boundary

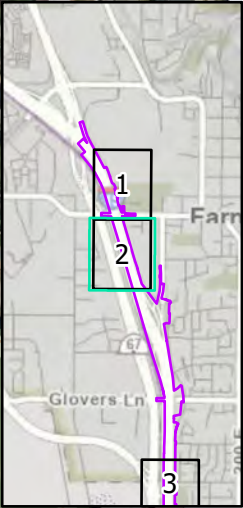


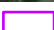
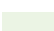
*Only areas with public park and recreation area impacts present are shown in this series

**SECTION 4(F) IMPACTS - NORTH SEGMENT
FARMINGTON STATE ST. OPTION
I-15 EIS: FARMINGTON TO SALT LAKE CITY**



Farmington Junior High School Playing Fields Temporary Occupancy



 Impact Boundary
 Section 4(f) Boundary



0 500 Feet

SECTION 4(F) IMPACTS - NORTH SEGMENT
FARMINGTON BOTH OPTIONS
I-15 EIS: FARMINGTON TO SALT LAKE CITY

*Only areas with public park and recreation area impacts present are shown in this series



- Impact Boundary
- Section 4(f) Boundary
- Section 4(f) Impact

*Only areas with public park and recreation area impacts present are shown in this series






SECTION 4(F) IMPACTS - NORTH SEGMENT
FARMINGTON BOTH OPTIONS
I-15 EIS: FARMINGTON TO SALT LAKE CITY



Centerville
Community Park
0.92 ac

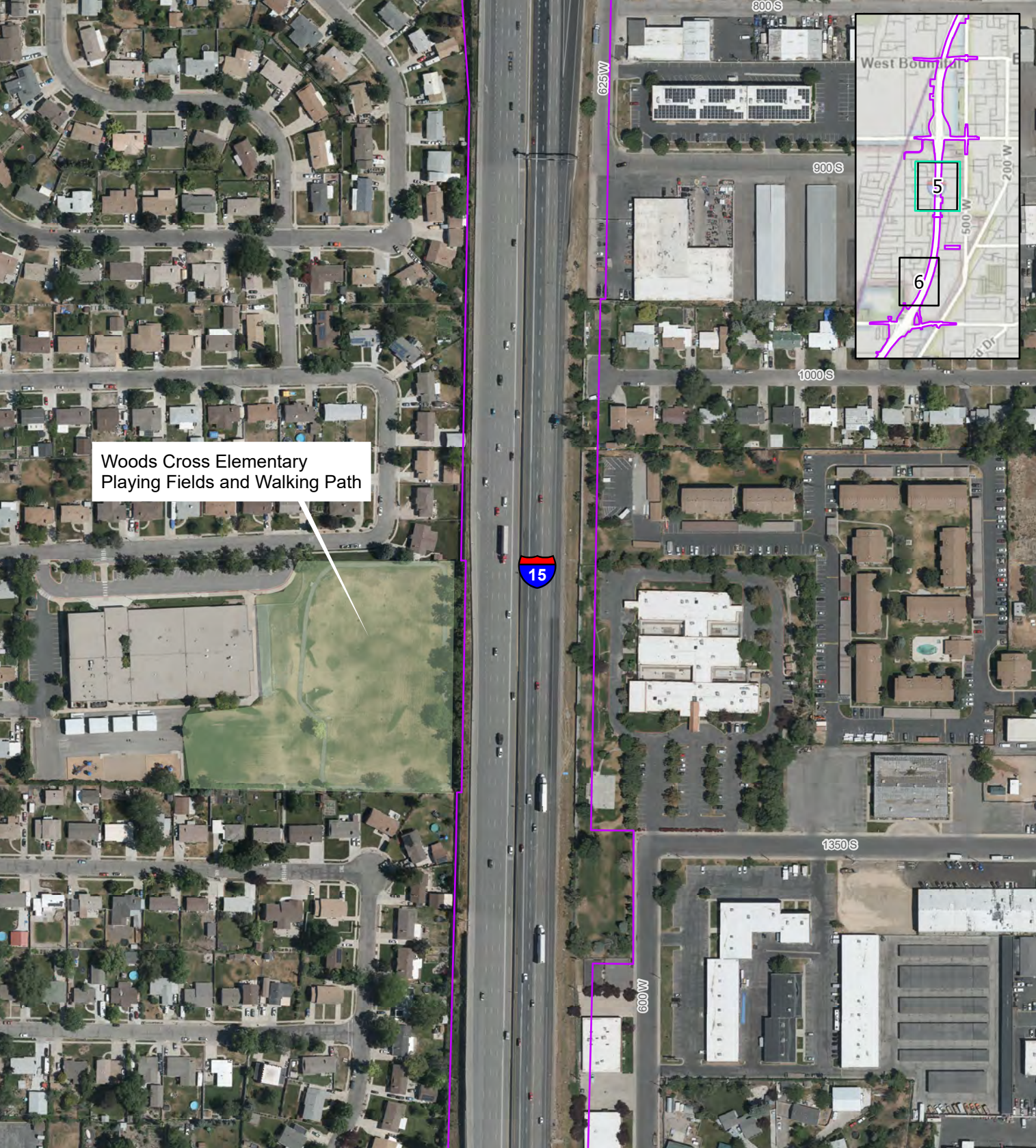
Temporary Occupancy
for Pedestrian Bridge

-  Impact Boundary
-  Section 4(f) Impact
-  Temporary Occupancy for Pedestrian Bridge

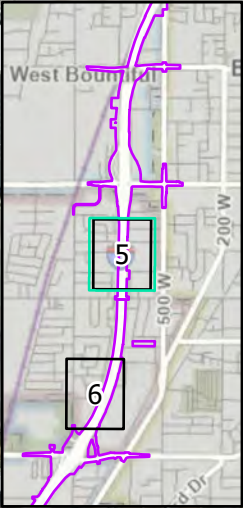
*Only areas with public park and recreation area impacts present are shown in this series

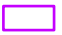



SECTION 4(F) IMPACTS - NORTH SEGMENT
FARMINGTON 400 W. OPTION
I-15 EIS: FARMINGTON TO SALT LAKE CITY



Woods Cross Elementary
Playing Fields and Walking Path



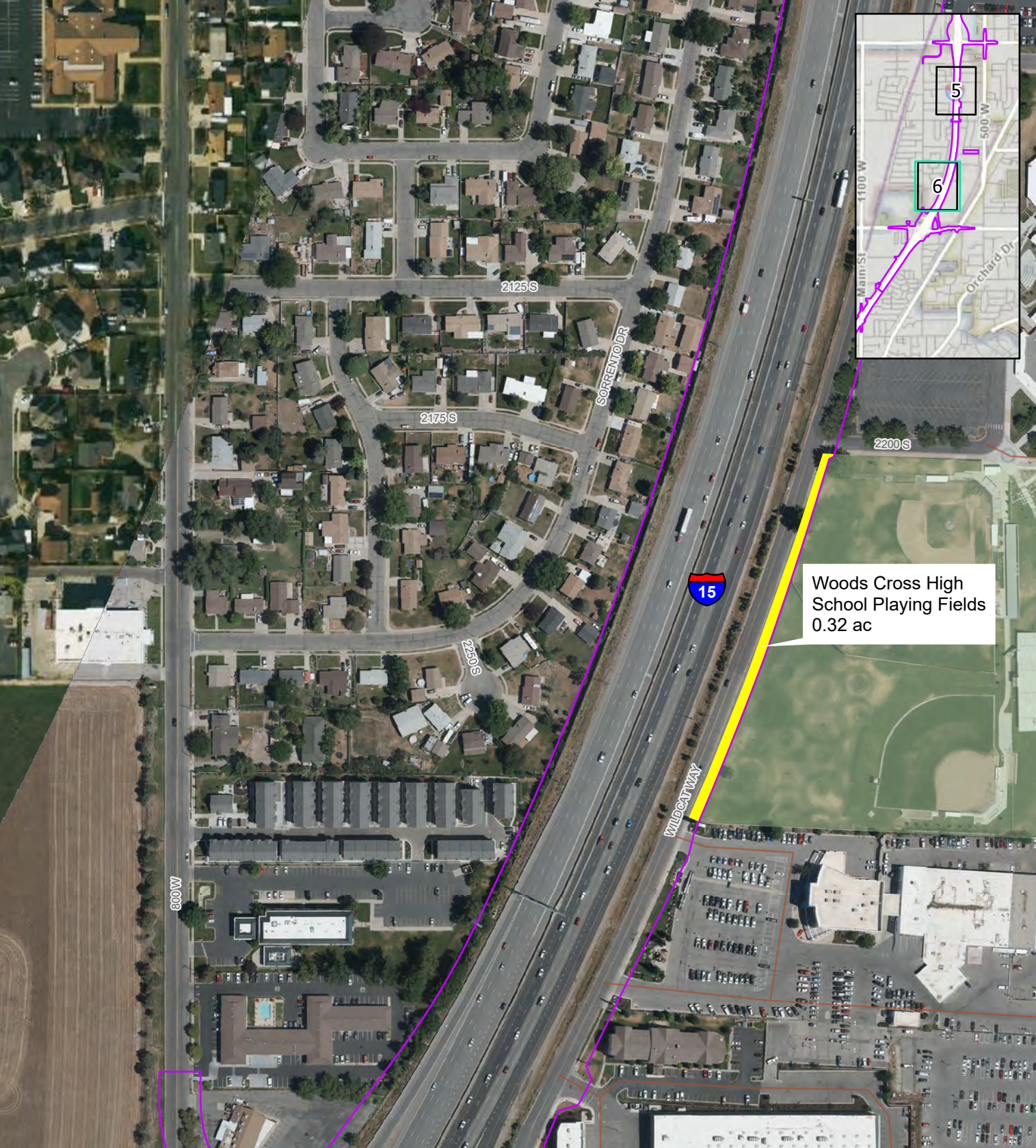
 Impact Boundary
 Section 4(f) Boundary



0 500 Feet

**SECTION 4(F) IMPACTS - NORTH SEGMENT
 FARMINGTON BOTH OPTIONS
 I-15 EIS: FARMINGTON TO SALT LAKE CITY**

*Only areas with public park and recreation area impacts present are shown in this series



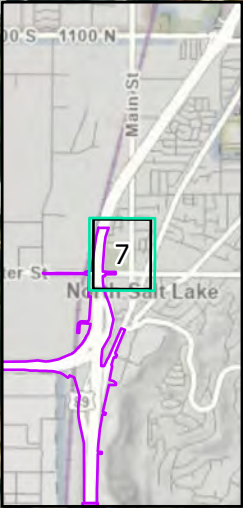
Woods Cross High School Playing Fields
0.32 ac

- Impact Boundary
- Section 4(f) Boundary
- Section 4(f) Impact



SECTION 4(F) IMPACTS - NORTH SEGMENT
FARMINGTON BOTH OPTIONS
I-15 EIS: FARMINGTON TO SALT LAKE CITY

*Only areas with public park and recreation area impacts present are shown in this series



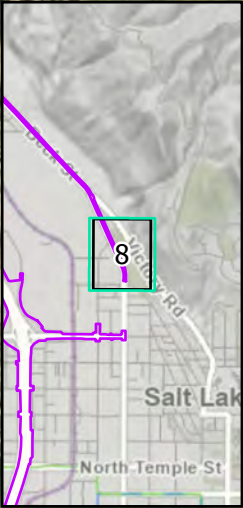
Hatch Park
0.21 ac

- Impact Boundary
- Section 4(f) Boundary
- Section 4(f) Impact



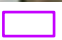

**SECTION 4(F) IMPACTS - SOUTH SEGMENT
SALT LAKE 1000 N. BOTH OPTIONS
I-15 EIS: FARMINGTON TO SALT LAKE CITY**

*Only areas with public park and recreation area impacts present are shown in this series



North Gateway Park
Temporary Occupancy

Warm Springs Park
Temporary Occupancy

 Impact Boundary
 Section 4(f) Boundary



0 500 Feet

**SECTION 4(F) IMPACTS - SOUTH SEGMENT
 SALT LAKE 1000 N. BOTH OPTIONS
 I-15 EIS: FARMINGTON TO SALT LAKE CITY**

*Only areas with public park and recreation area impacts present are shown in this series

This page is intentionally left blank